

Power Distribution Room / Power Control Room / E-House is a prefabricated modular outdoor enclosure to house of different medium voltage (MV) switchgear and an Motor Control center (MCC) and others for your applications. It is ready to operate in the field with minimum installation, commissioning and start up time - as an alternative to traditional on-site building construction (concrete block, brick construction or similar), is the sensible alternative to on-site construction



#### Cost Saving

Economical e House solutions lead time, transport costs and most importantly, the cost and risk of site works



#### Simplify

E-House provides electrical power to wherever it's needed quickly, flexibly and reliably



#### One-stop solution

Modular concept with pre-engineered designs to be combined to meet project requirement, everything from one partner, from the planning to the installation and commissioning



#### Efficiency

Reduced Site Resource and comprehensive FAT can be performed before delivery reducing site commissioning requirements.

## TYPICAL SEGMENT APPLICATION

---

### Chemical, Oil & Gas Facilities



---

### Utility & Power Generation



---

### Mining & Heavy Industry



## Industrial Facility & Infrastructure



---

## Transportation & Railways



---

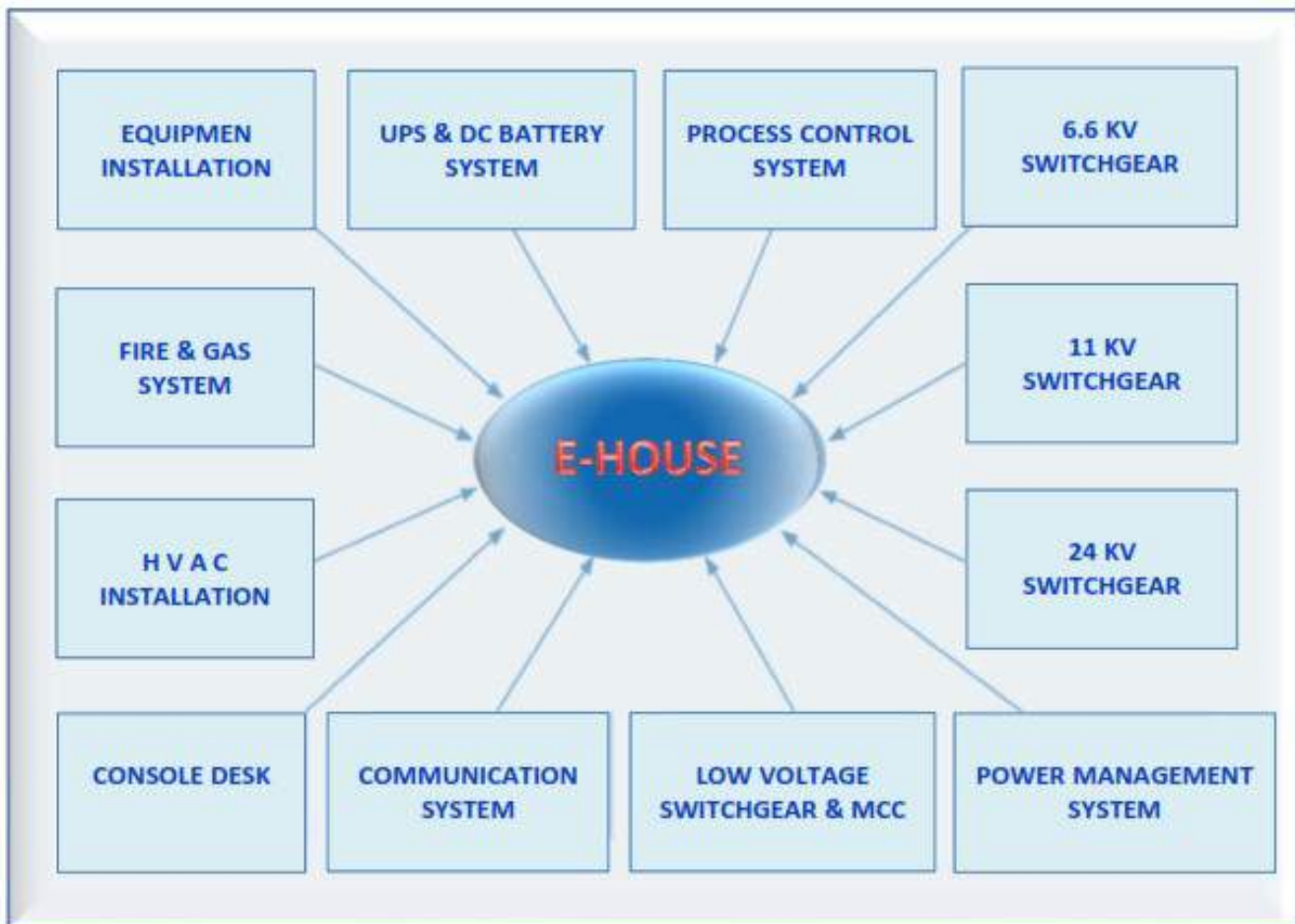
## Data Center





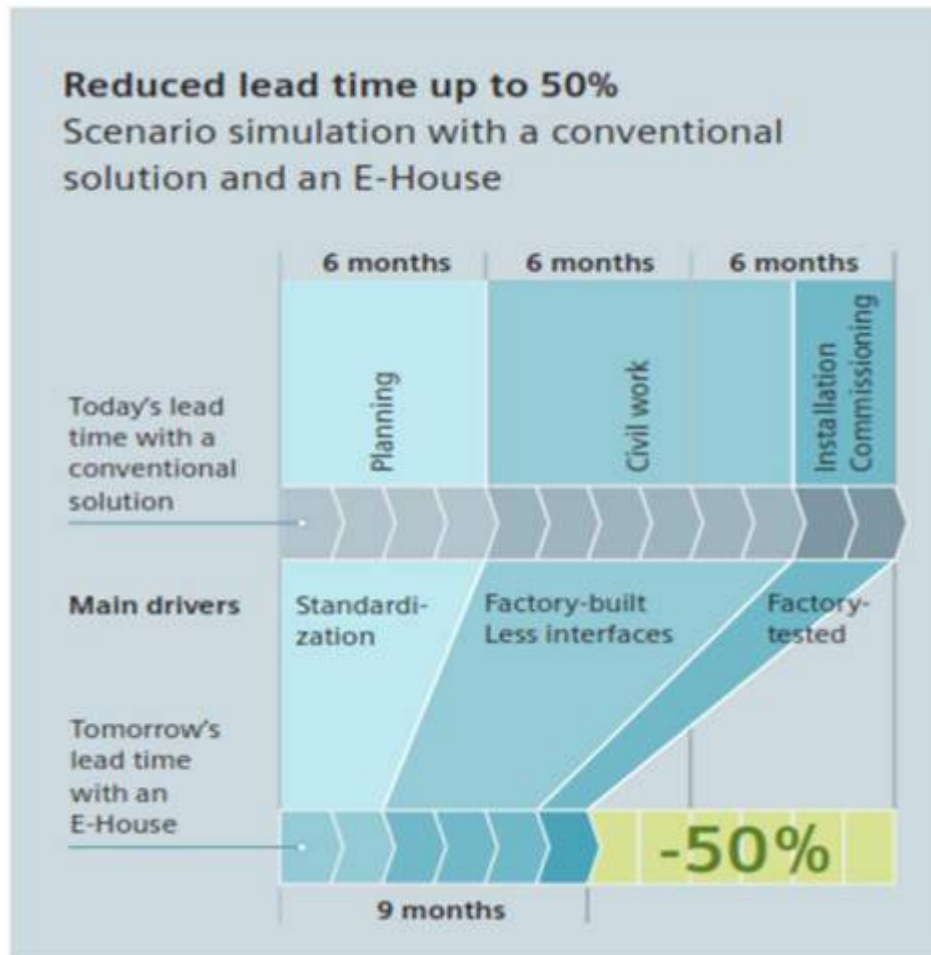
## PROJECT SCOPE & INTEGRATION

An E-House can consist of one or several modules equipped with high-quality components, including medium voltage switchgear, low-voltage switchboards, power transformers, medium-voltage/high-voltage (MV/HV) cable, protection, monitoring and control systems, Power Management Systems, Variable Frequency Drives, Fire detection system, HVAC and building management systems. Completely developed, manufactured, assembled and pretested at the factory or assembly yard prior to delivery, an E-House simply needs to be connected and put into operation on site.



## E-HOUSE SAVE TIME

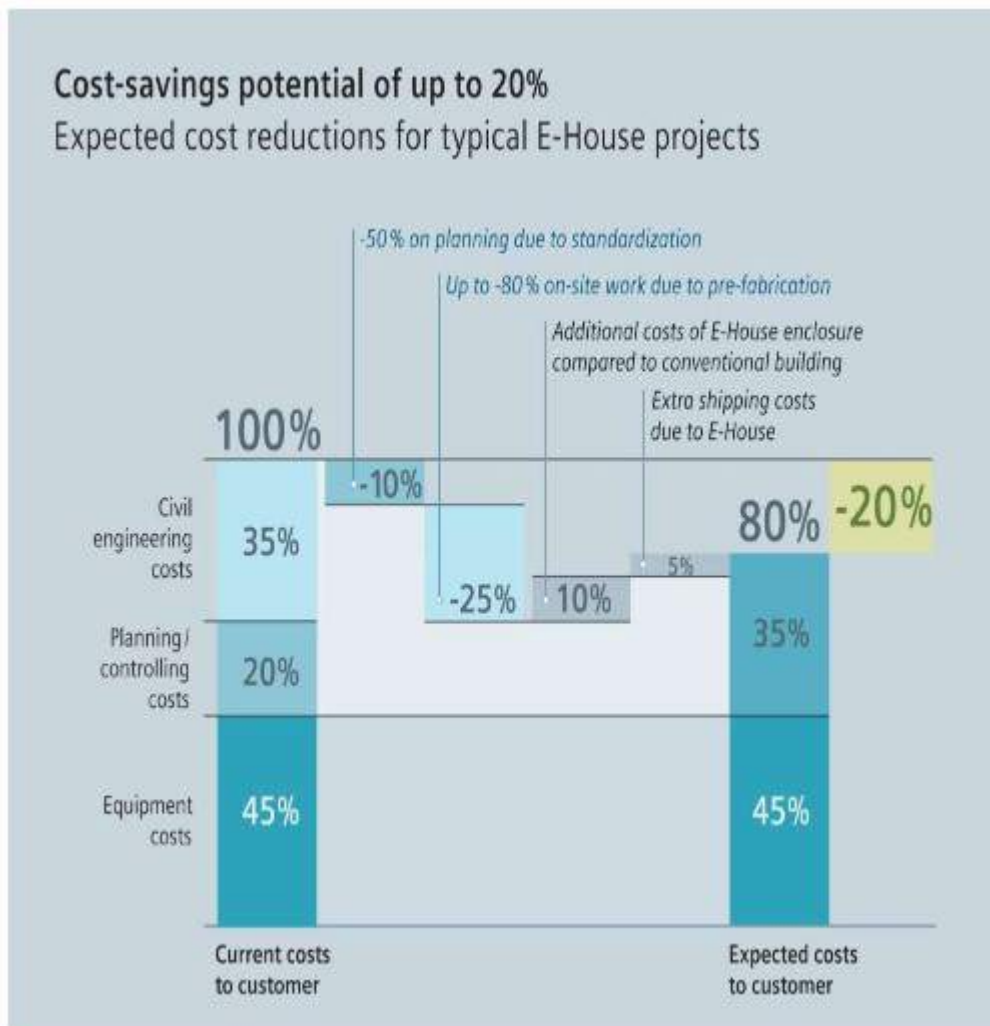
- ⇒ Reduce civil engineering work
- ⇒ Reduce construction delay (e.g. due to weather)
- ⇒ Enhance installation time thank to plug and play
- ⇒ Minimum interference with other on site activities



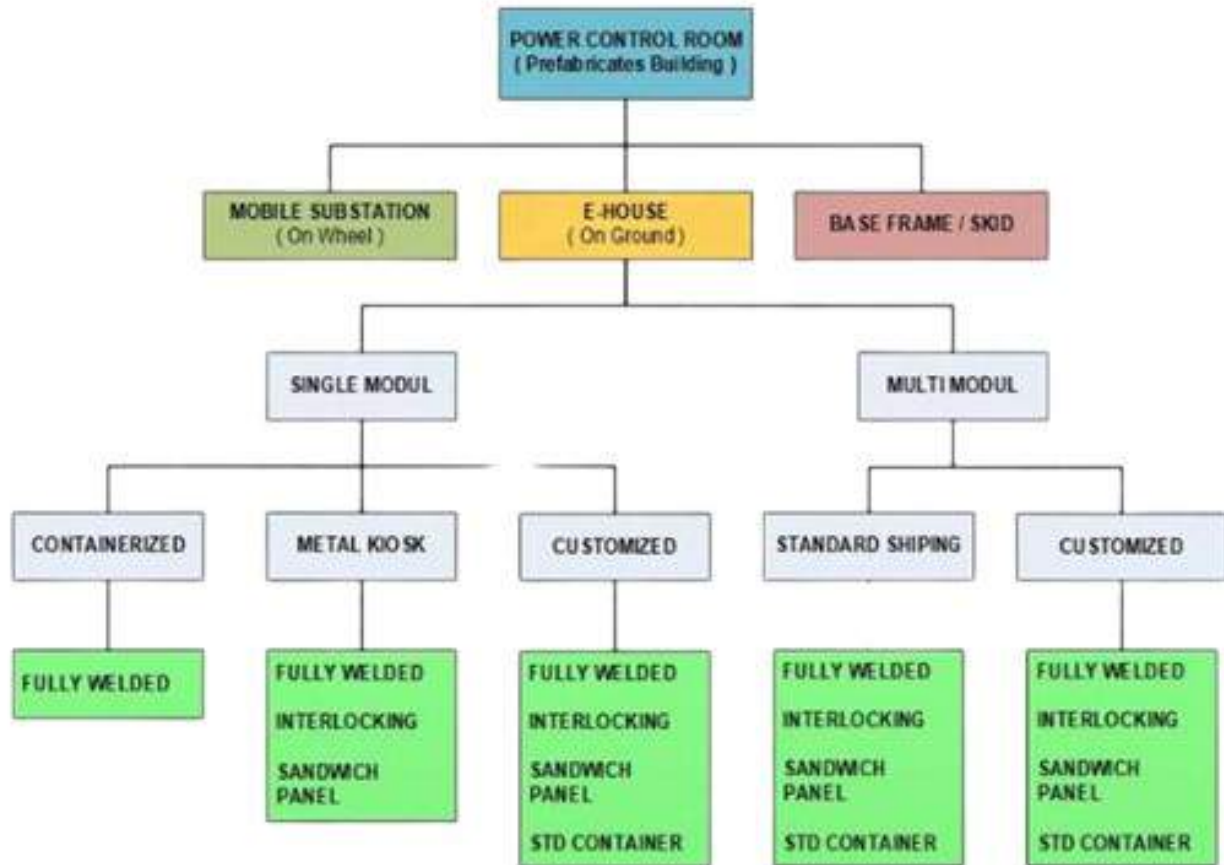
E House power control room solution are fast and easy to install. Compared with conventional site build construction, E house can reduce over all lead time around up to 50%. That's because the prefabricated and pre tested only required installation, connection, and commissioning.

## COST SAVING

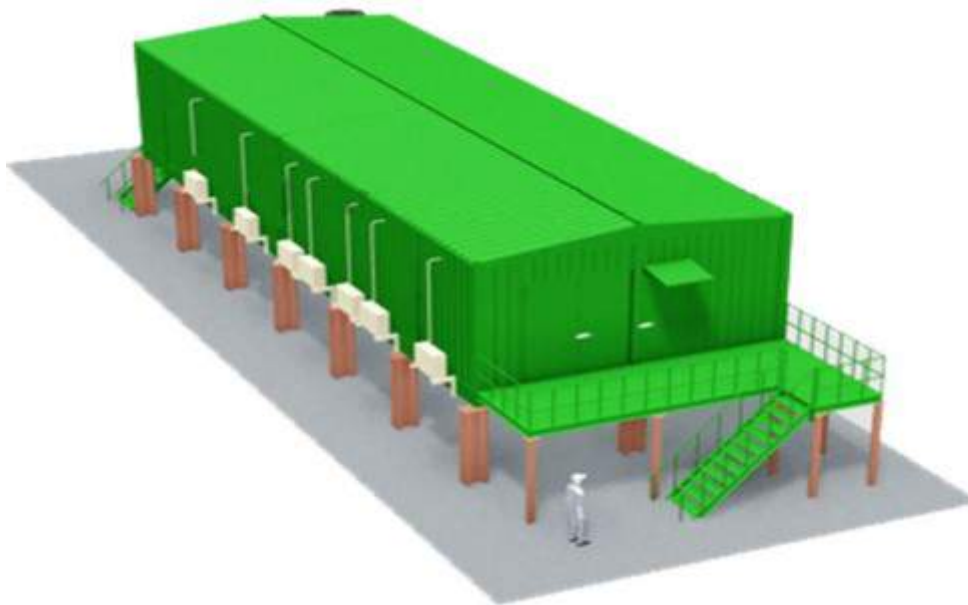
The E house is delivery fully integrated and pre tested. This reduces worker presence on site of construction, and installation time is significantly reduced. E-House also benefit from optimized foot print thank to it is modularity and compact design. This alone adds up to total savings



## TYPE OF POWER CONTROL ROOM



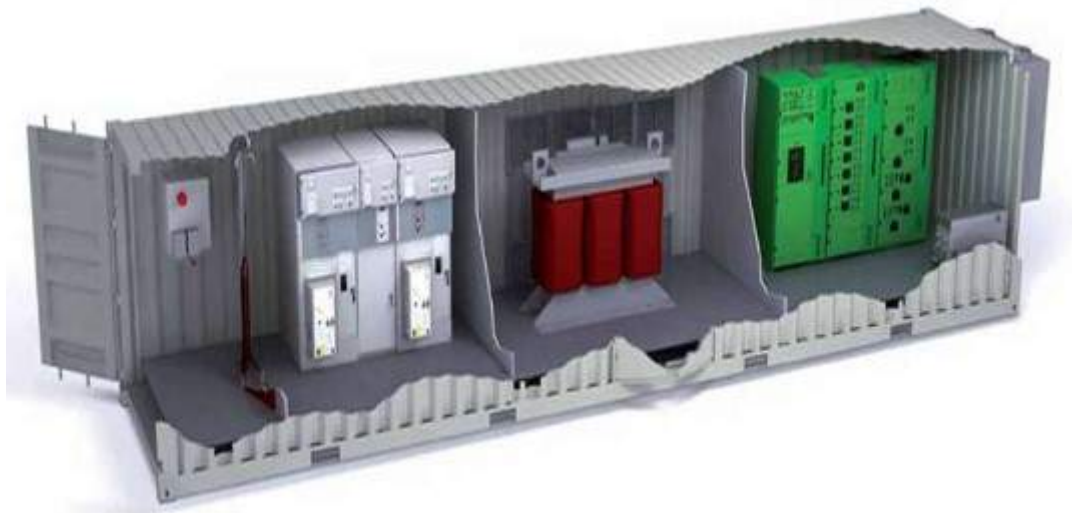
## FULLY WELDED



TECHNICAL SPECIFICATION		
BASE FRAME	WF/H-BEAM/UNP	A36/SS400
FLOOR	PLATE 10mm	A36/SS400
	ANTISTATIC VINYL	TILE / SHEET
EXTERIOR WALL	CORRUGATED	A36/SS400/SUS316
INSULATION	MINERAL WOOL	DENSITY # 40 – 100
INTERIOR WALL	INTERLOCKING	GALVANIZED 1.5mm
ROOF	SLOOP MINIMAL 2°	A36/SS400/SUS316
DOOR & WINDOW	PANIC BAR SYSTEM	FOR EMERGENCY
	DOOR GASKET	WATER TIGHT
PROTECTIVE COATING	CATEGORY C3/C4/C5 - ISO 12944	
LIGHTING	LED MIN. 300 LUX	C/W EMERGENCY
HVAC	SPLIT / WINDOW – N+1 CAPACITY BY CALCULATION	
PEDESTAL	WF/H-BEAM/UNP	A36/SS400
LADDER & PLATFORM	GRATING / EXPANDER PLATE GALVANIZED	
HAND RAIL	PIPE SCH-40 / 1.5" – 2"	SAFETY YELLOW



## CONTAINERIZED



### TECHNICAL SPECIFICATION

<b>SIIZE 20/40/STD/HICUBIC</b>	STD CARGO CONTAINER	CORTEN STEEL
<b>FLOOR</b>	STD CARGO CONTAINER	APITONG WOOD
	ANTISTATIC VINYL	TILE / SHEET
<b>EXTERIOR WALL</b>	CORRUGATED 2 mm	CORTEN STEEL
<b>INSULATION</b>	MINERAL WOOL	DENSITY # 40 / 50 mm
<b>INTERIOR WALL</b>	INTERLOCKING	GALVANIZED 1.5 mm
<b>ROOF</b>	STD CARGO CONTAINER	CORTEN STEEL
<b>DOOR &amp; WINDOW</b>	PANIC BAR SYSTEM	FOR EMERGENCY
	DOOR GASKET	WATER TIGHT
<b>PROTECTIVE COATING</b>	PAINTING CATEGORY C3 - ISO 12944	
<b>LIGHTING</b>	LED MIN. 300 LUX	C/W EMERGENCY
<b>HVAC</b>	SPLIT / WINDOW CAPACITY BY CALCULATION	
<b>PEDESTAL</b>	OPTIONAL	
<b>LADDER &amp; PLATFORM</b>	OPTIONAL	
<b>HAND RAIL</b>	OPTIONAL	

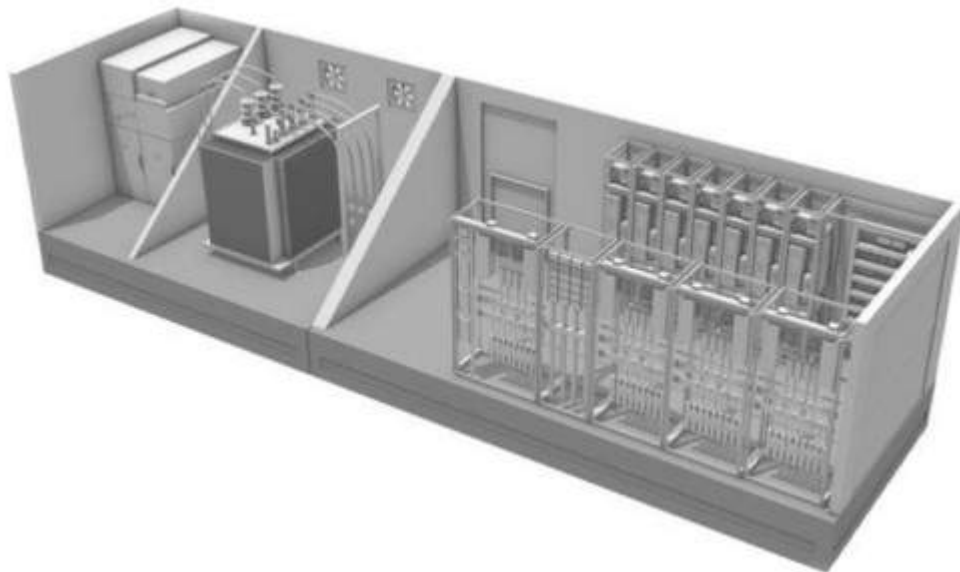
## INTERLOCKING



### TECHNICAL SPECIFICATION

<b>BASE FRAME</b>	WF/H-BEAM/UNP	A36/SS400
<b>FLOOR</b>	PLATE 10mm	A36/SS400
	ANTISTATIC VINYL	TILE / SHEET
<b>EXTERIOR WALL</b>	CORRUGATED	A36/SS400/SUS316
<b>INSULATION</b>	MINERAL WOOL	DENSITY # 40 – 100
<b>INTERIOR WALL</b>	INTERLOCKING	GALVANIZED 1.5mm
<b>ROOF</b>	SLOOP MINIMAL 2°	A36/SS400/SUS316
<b>DOOR &amp; WINDOW</b>	PANIC BAR SYSTEM	FOR EMERGENCY
	DOOR GASKET	WATER TIGHT
<b>PROTECTIVE COATING</b>	CATEGORY C3/C4/C5 - ISO 12944	
<b>LIGHTING</b>	LED MIN. 300 LUX	C/W EMERGENCY
<b>HVAC</b>	SPLIT / WINDOW – N+1 CAPACITY BY CALCULATION	
<b>PEDESTAL</b>	WF/H-BEAM/UNP	A36/SS400
<b>LADDER &amp; PLATFORM</b>	GRATING / EXPANDER PLATE GALVANIZED	
<b>HAND RAIL</b>	PIPE SCH-40 / 1.5" – 2"	SAFETY YELLOW

## SANDWICH WALL



### TECHNICAL SPECIFICATION

<b>BASE FRAME</b>	WF/H-BEAM/UNP	A36/SS400
<b>FLOOR</b>	PLATE 10mm	A36/SS400
	ANTISTATIC VINYL	TILE / SHEET
<b>EXTERIOR WALL</b>	SANDWICH PANEL	COLORBOND 0.5 mm
<b>INSULATION</b>	POLYURETHANE/EPS	DENSITY # 30 KG/M3
<b>INTERIOR WALL</b>	SANDWICH PANEL	COLORBOND 0.5 mm
<b>ROOF</b>	SLOOP MINIMAL 2°	CORRUGATED
<b>DOOR &amp; WINDOW</b>	PANIC BAR SYSTEM	FOR EMERGENCY
	DOOR GASKET	WATER TIGHT
<b>PROTECTIVE COATING</b>	ZINCALUM PREPAINTED	
<b>LIGHTING</b>	LED MIN. 300 LUX	C/W EMERGENCY
<b>HVAC</b>	SPLIT / WINDOW – N + 1 CAPACITY BY CALCULATION	
<b>PEDESTAL</b>	WF/H-BEAM/UNP	A36/SS400
<b>LADDER &amp; PLATFORM</b>	GRATING / EXPANDER PLATE GALVANIZED	
<b>HAND RAIL</b>	PIPE SCH-40 / 1.5" – 2"	SAFETY YELLOW



## Success Story



Project Name : RMU Mobile Substation (Overseas Project)  
Client : APAC Eenergy LTD



Project Name : TSS3 Project  
End User : PT. Freeport Indonesia  
Client : PT. MIDROC AUTOMATION



Project Name : WETAR ISLAND COPPER PROJECT  
Client : PT. AGGREKO



Project Name : MIDROC DMLZ E-HOUSE  
End User : PT. FREEPORT INDONESIA  
Client : PT. MIDROC AUTOMATION



Project Name : LCOM SWITCHGEAR BUILDING -  
PHE ONWJ LPSU  
Client : PT. TIMAS SUPLINDO



Project Name : MIG Data Centre CKG11  
Client : PT. technical shout east asia

## Address :

Assembly Factory:  
Kawasan Industri Greenland I  
Jl. Greenland IV Blok AC No. 07 kota Deltamas  
Cikarang Pusat, Bekasi-Indonesia 17530

Sheet Metal Factory:  
Kawasan Delta Silicon 3  
Jl. Rotan I Blok F27 NO. 20D Lippo Cikarang  
Cikarang Pusat - Bekasi 17530

Phone : +62-21 8997 2630,31,33  
Fax : +62-21 8997 6234  
Website : [www.bcp-group.co.id](http://www.bcp-group.co.id)  
Email : [marketing@bcp-group.co.id](mailto:marketing@bcp-group.co.id)